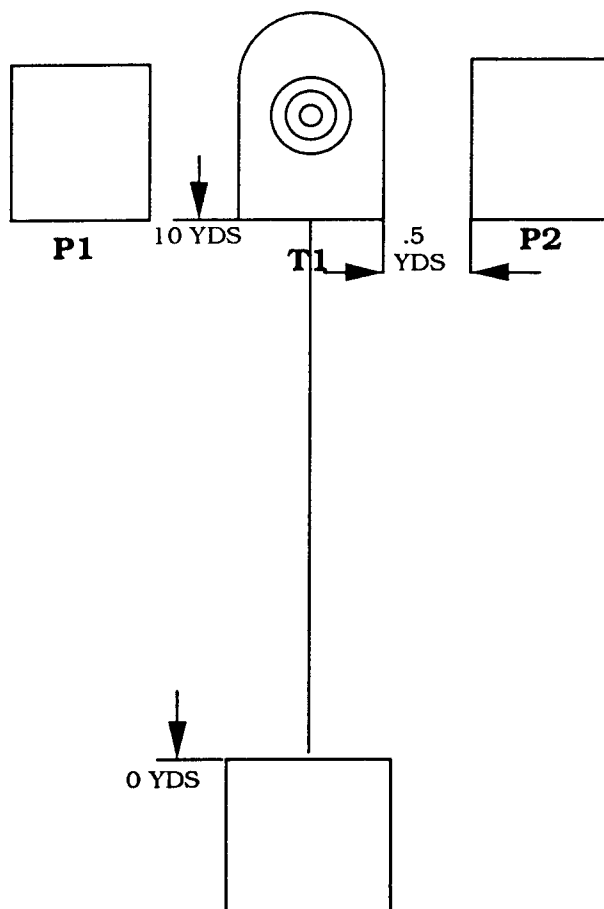


**INTERNATIONAL
CONFEDERATION
OF
REVOLVER
ENTHUSIASTS**

**CLASSIFIER 96-6
FAST STEEL & FAST X's
DESIGNER:**



Start Position: Standing in box A, hands in surrender position, facing down range .

Stage Procedure: On signal draw and engage P1 and P2 with two (2) rounds each and T1 with one (1) round, reload and engage P1 & P2 with two (2) rounds each and T1 with one (1) round.

Targets: 1 paper and 2 18"x24" steel plates

Scoring: Comstock

Min. Rounds: 12

Min. Distance: 10 Yards

Max. Distance: 10 Yards

Start Signal: Audible

Stop Signal: Last Shot

Penalties:

Premature start	+5 seconds
Foot faults	+5 seconds
Extra shot/hit	+5 seconds
Each mandatORY targetS not hit	+5 seconds
Procedures	+5 seconds

Stage sit-up: Targets are set to standard height per Rule Book, shooting boxes are 3' X 3', all distances are in yards.